

## Contents

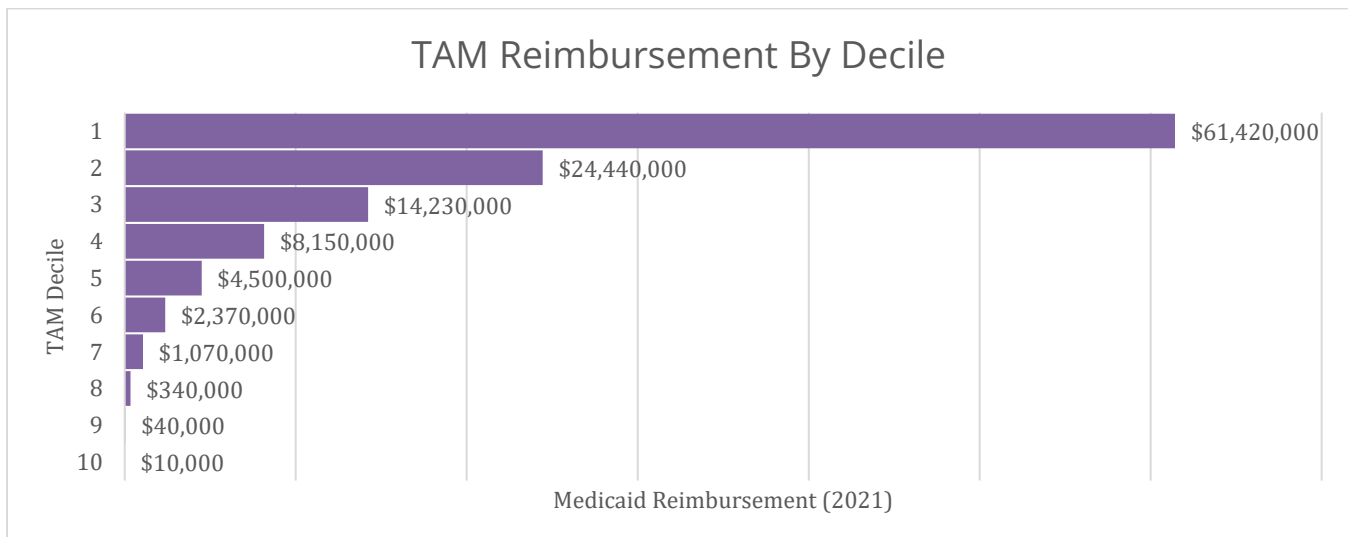
- Background..... 1
- Deciles..... 1
- Subgroups..... 2
- Demographics ..... 2
- Location ..... 3
- Service Delivery..... 4
- Medications..... 4
- Chronic Conditions ..... 5
- Co-Occuring Behavioral and Physical Health Conditions..... 5
- Cost..... 6

## Background

Previous Targeted Adult Medicaid (TAM) summary documents were produced for the Behavioral Health Delivery Workgroup on [May 25, 2022](#) and [June 10, 2022](#). This document provides further detail about the top decile of TAM members based on Medicaid expenditures in 2021. Their characteristics may be compared and contrasted with the larger group as summarized in the May 25<sup>th</sup> analysis.

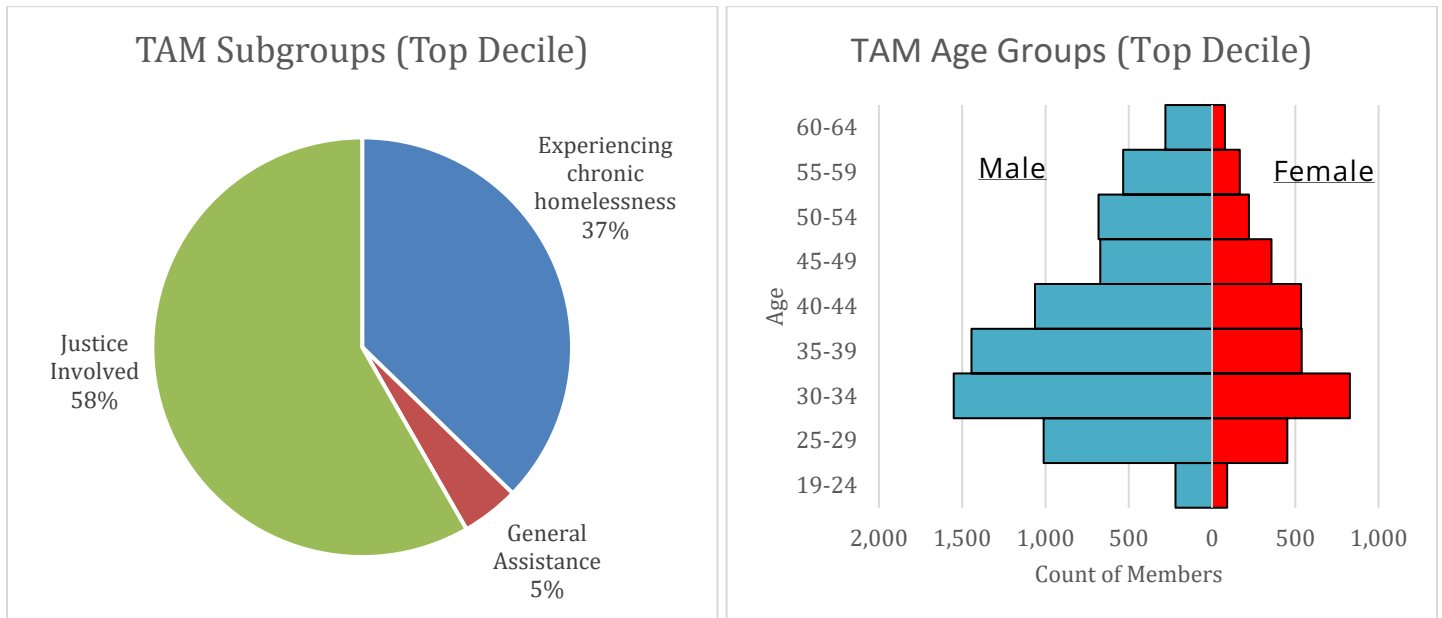
## Deciles

In 2021, 10,278 TAM members utilized services, therefore each decile consists of about 1,028 individuals. As previously noted, the top decile accounts for about 53% of all TAM expenditures. This equates to \$61.4 Million.



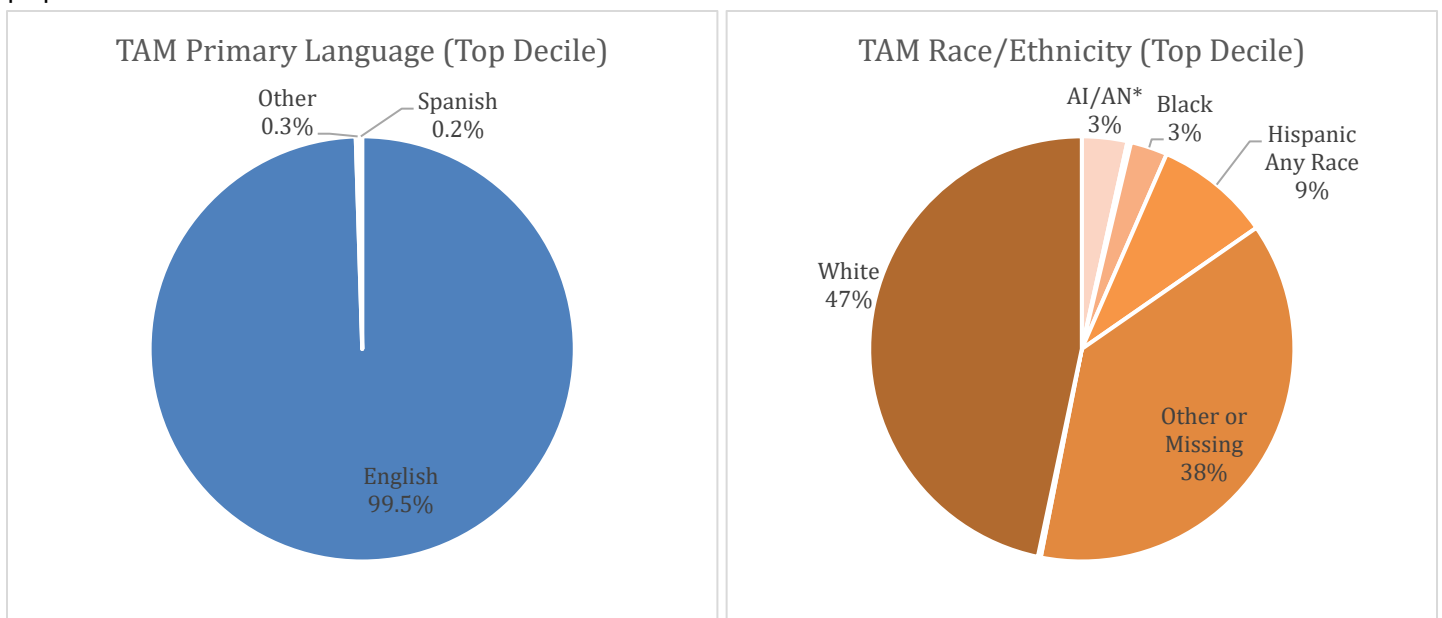
## Subgroups

The majority of the top decile is justice-involved individuals, however individuals experiencing chronic homelessness are disproportionately represented (37% instead of 22%). The age groups of the top decile are very similar to the broader TAM population, but a slightly larger portion are female (30% instead of 21%).



## Demographics

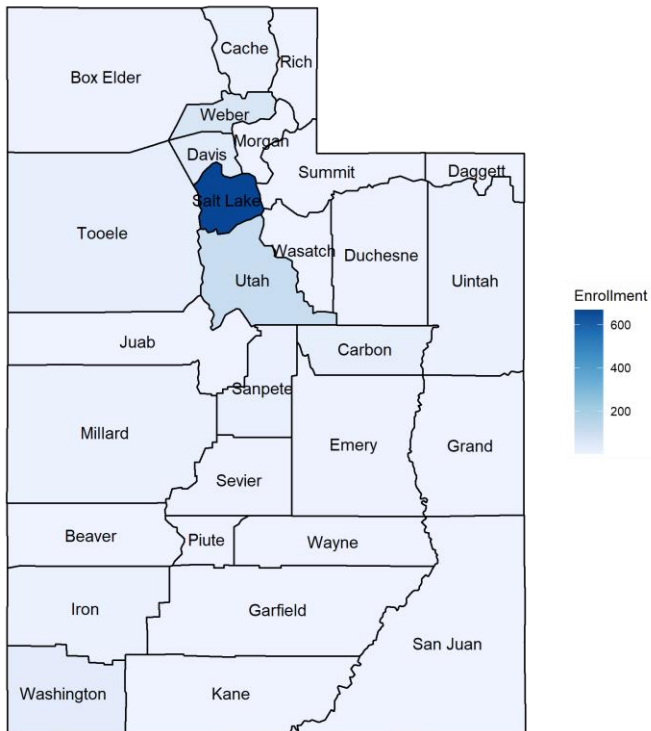
The top decile of TAM members is almost exclusively English-speaking. Among those that have self-identified, white non-Hispanics make up a larger portion of the top decile than the broader TAM population.



## Location

The top decile of TAM members is even more concentrated in urban areas with a clear majority living in Salt Lake County.

TAM Enrollment (Top Decile)



Local Health District	Members	Percent of TAM
Salt Lake	667	65%
Utah County	103	10%
Weber-Morgan	63	6%
Southwest	48	5%
Davis	33	3%
Central	31	3%
Southeast	28	3%
Tooele	19	2%
Bear River	17	2%
TriCounty	17	2%
San Juan	≤10	
Wasatch	≤10	
Summit	≤10	

## Service Delivery

The top decile of TAM members is, by definition, high utilizers of services. 96% received at least one dispensed medication and 93% had at least one visit with a primary care practitioner. Four in five received substance use treatment and 2/3 had at least one emergency department visit. Among those that had a visit with a primary care practitioner, 92% had multiple visits.

Type of Service	Percent of TAM
Pharmacy-Dispensed Medication	96%
Primary Care	93%
Laboratory/Diagnostic Service	83%
Substance Use Treatment	81%
Emergency Department	67%
Inpatient Hospitalization	46%
Dental Service	34%
Mental Health Treatment	20%

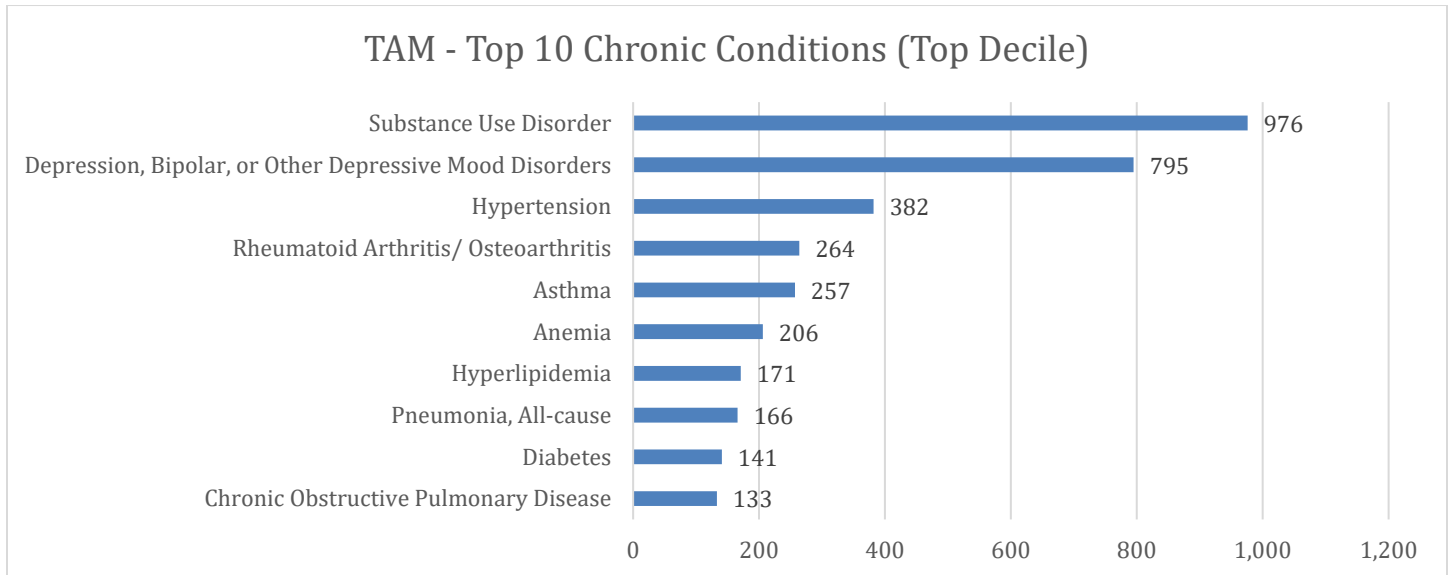
## Medications

Antidepressants and anticonvulsants were dispensed to a majority of individuals in the top decile of TAM members.

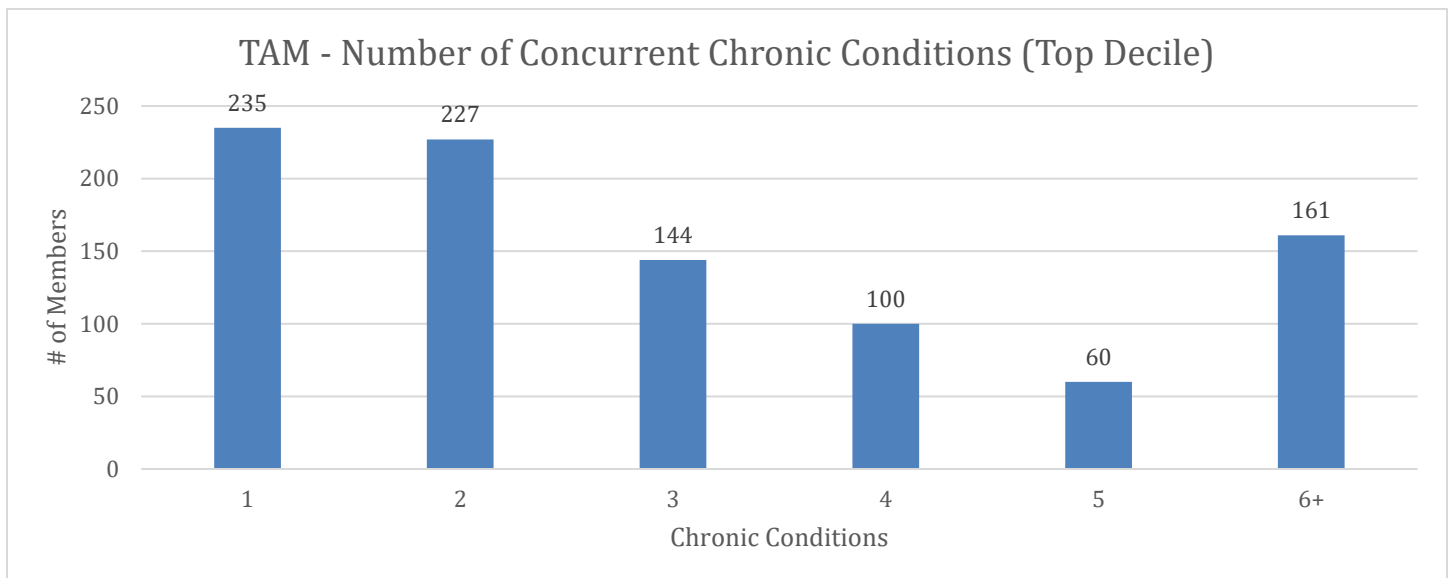
Drug Group	Examples	Percent of TAM
Antidepressants	SSRIs, SNRIs, Serotonin Modulators, etc.	67%
Anticonvulsants	Gabapentin, Lamotrigine, etc.	56%
Analgesics - Anti-Inflammatory	Nonsteroidal Anti-inflammatory Agents (NSAIDs)	51%
Antipsychotics/Antimanic Agents	Dibenzapines, Quinolinone Derivatives, etc.	46%
Antihypertensives	Clonidine, ACE Inhibitors, etc.	43%
Medication Assisted Therapy	Suboxone, Vivitrol, etc.	42%
Antianxiety Agents	Benzodiazepines	41%
Psychotherapeutic And Neurological Agents - Misc.	Smoking cessation	36%
Anti-Infective Agents - Misc.	Antibiotics	28%
Ulcer Drugs/Antispasmodics/Anticholinergics	Proton-pump inhibitor	27%
Dermatologicals	Topical Antibiotics, Anti-inflammatory Agents, etc.	27%

## Chronic Conditions

Out of the 1,028 TAM members in the top decile, 976 have a substance use disorder. Depression, Bipolar, or Other Depressive Mood Disorders is the next most common chronic condition.



235 TAM members in the top decile have one chronic condition and 692 have more than one chronic condition. The distribution is shown below.



## Co-Occurring Behavioral and Physical Health Conditions

743 TAM members in the top decile with a behavioral health condition have a co-occurring physical health chronic condition. The most common co-occurring condition is hypertension (365 members). Rheumatoid Arthritis/Osteoarthritis (251) and Asthma (247) are the next most common co-occurrences.

## Cost

The top decile of TAM members have an average monthly cost of \$5,065 per member per month. This accounts for cost offsets like pharmacy rebates. This cost is 67% attributable to physical health services, 32% attributable to behavioral health, and 1% attributable to dental services.

